



River discharge estimation for narrow rivers: benefits of Sentinel-2 high resolution data

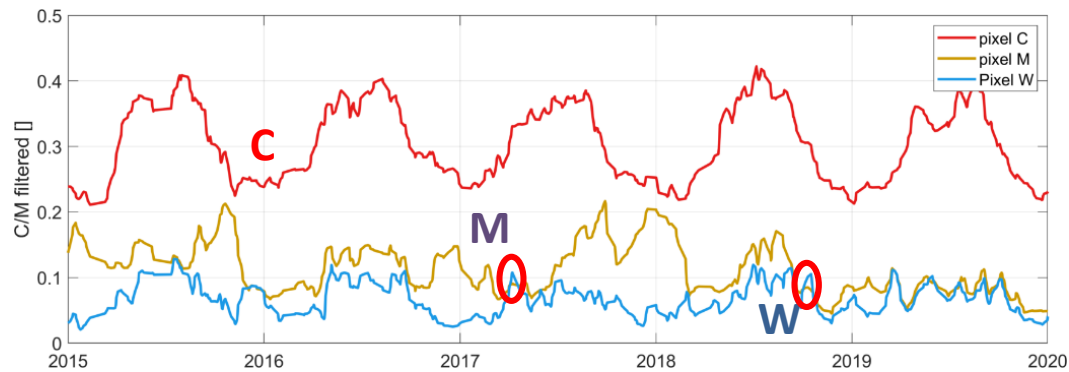
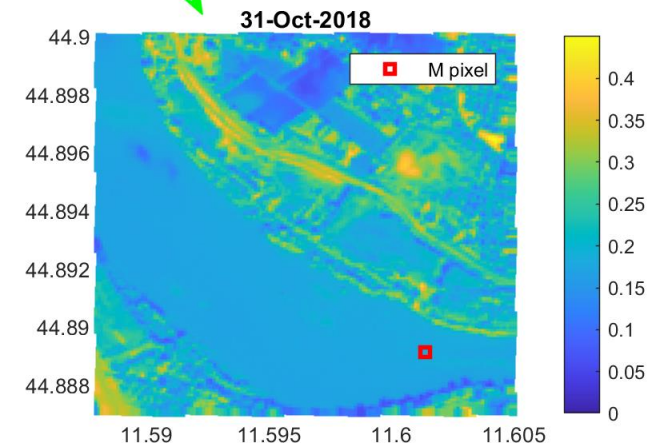
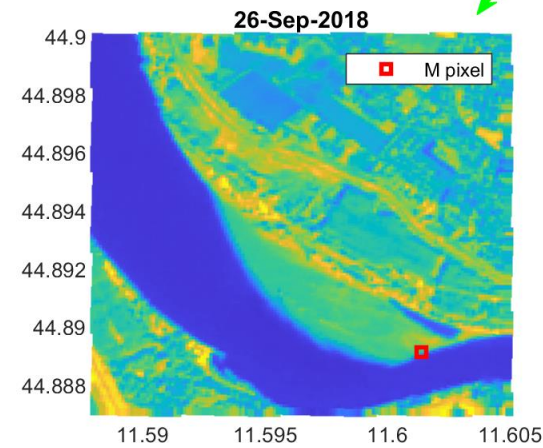
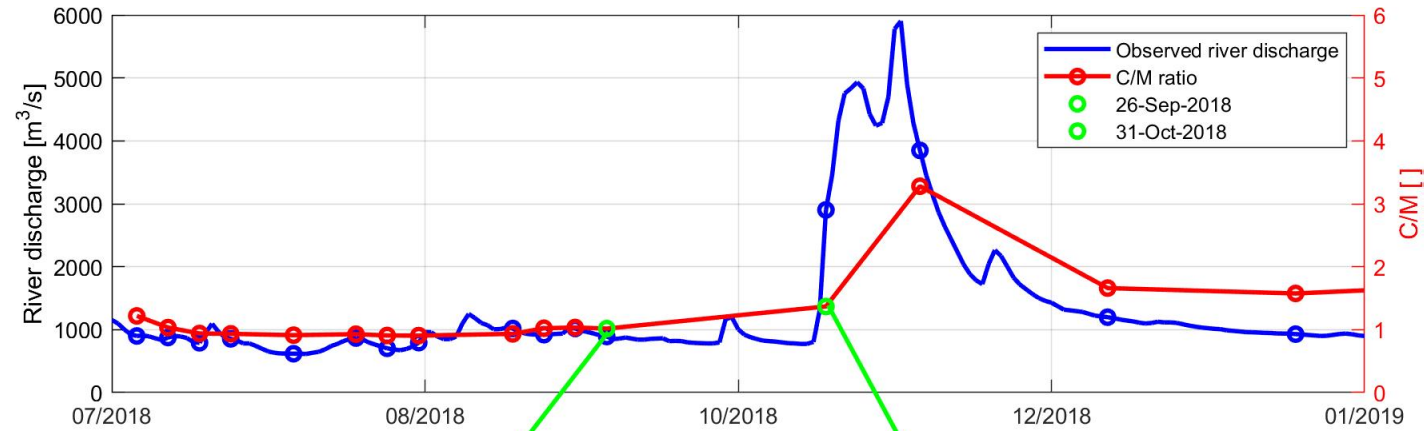
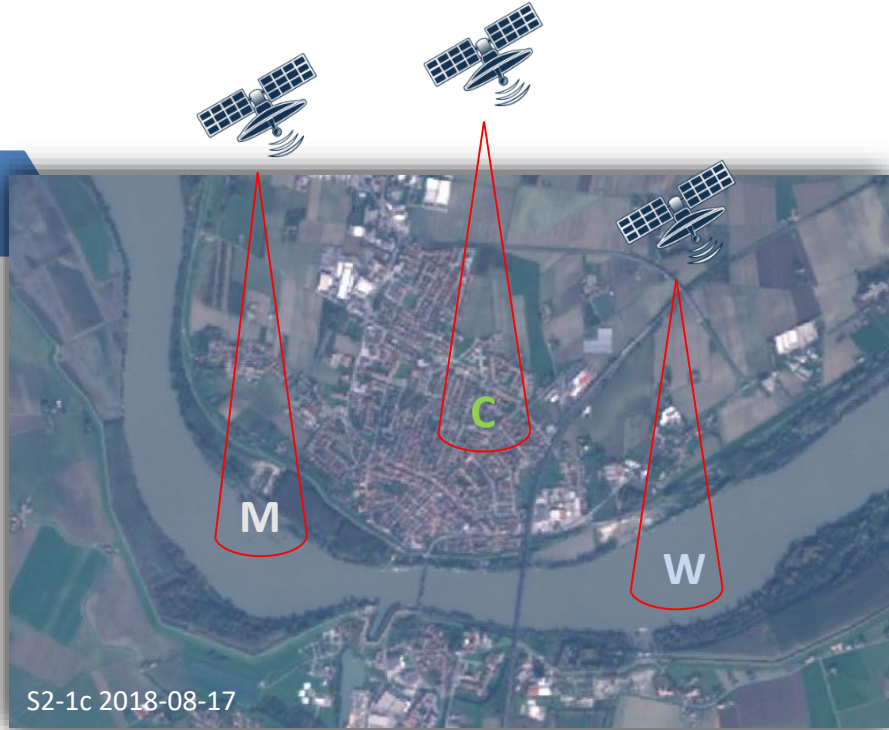
Paolo Filippucci^{1,2,3}, Luca Brocca¹, Angelica Tarpanelli¹

1) National Research Council, Research Institute for Geo-Hydrological Protection, Perugia, Italy

2) Università degli Studi di Perugia, Department of Civil and Environmental Engineering, Perugia, Italy

3) TUWien, Department of Geodesy and Geoinformation, Wien, Austria

e-mail: paolo.filippucci@irpi.cnr.it



$$Q = f\left(\frac{C}{M}\right) \Rightarrow Q = f\left(\frac{C}{M - W + \text{coeff}}\right)$$

$$\text{coeff} = \min(M) - \min(M - wa * W)$$

