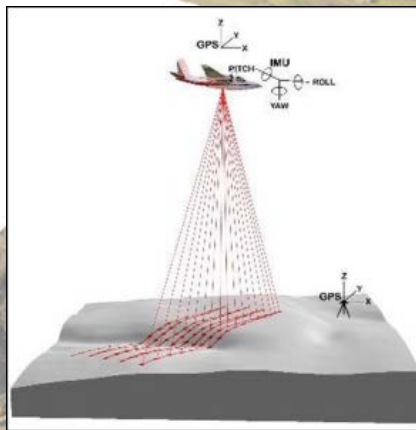


Assessment of space time evolution of a large earthflow by comparing multi source data

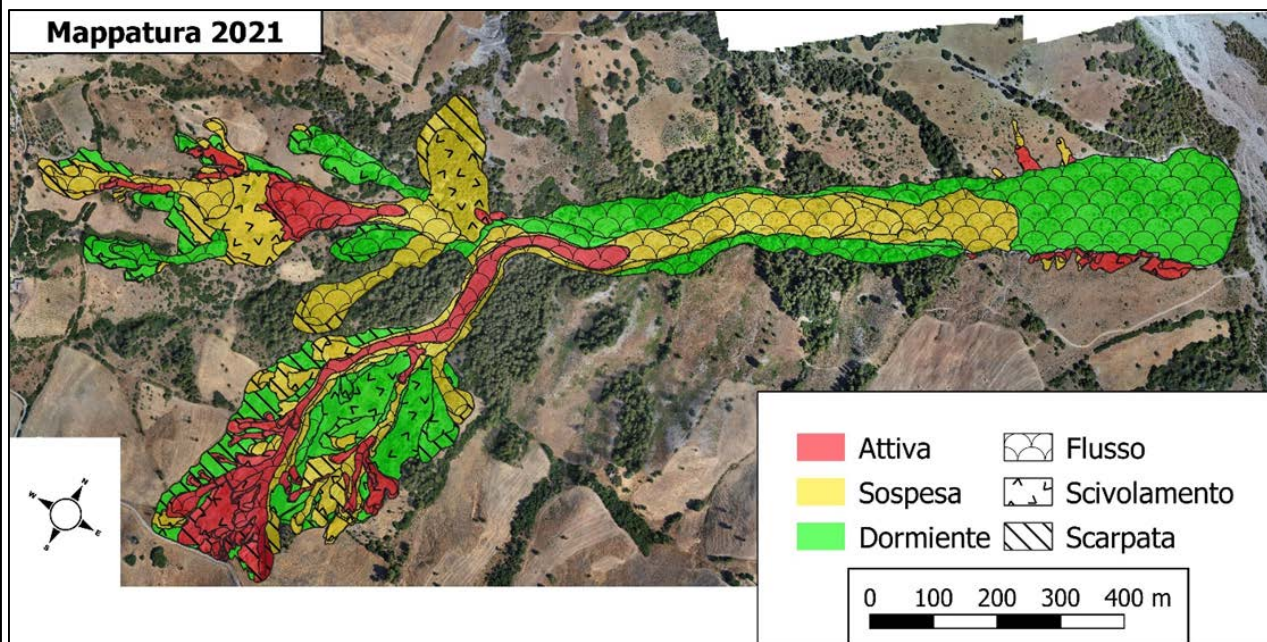
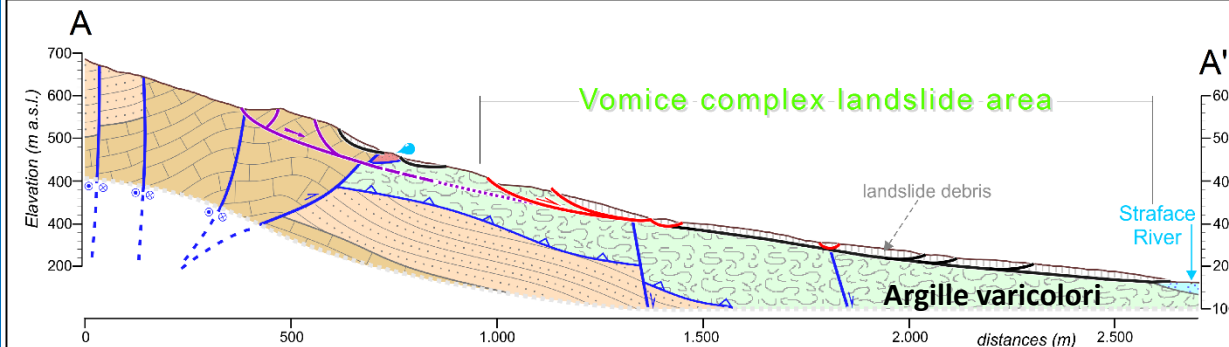
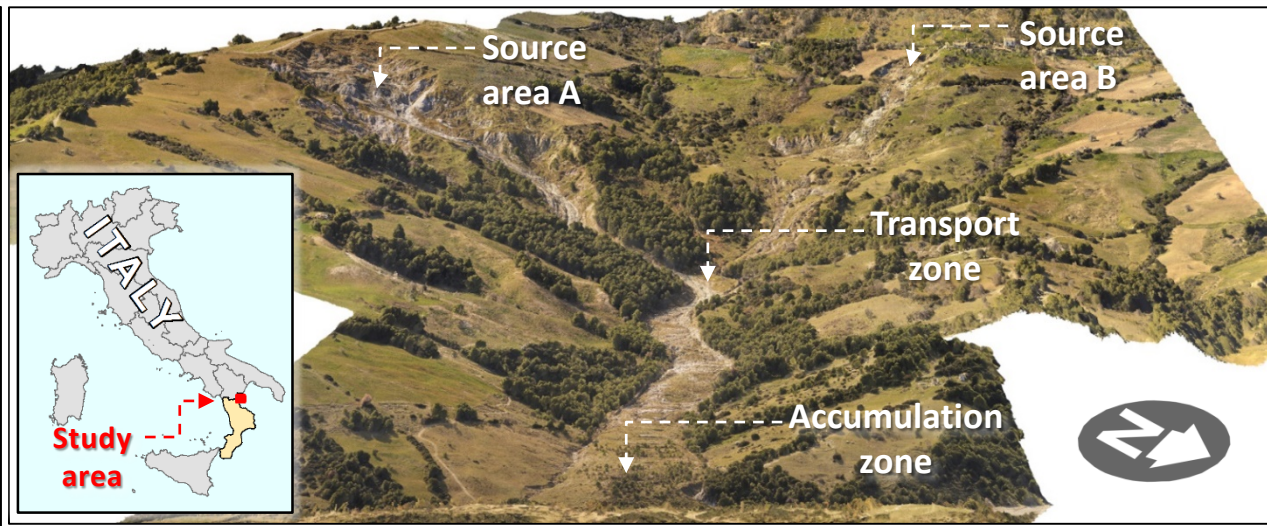
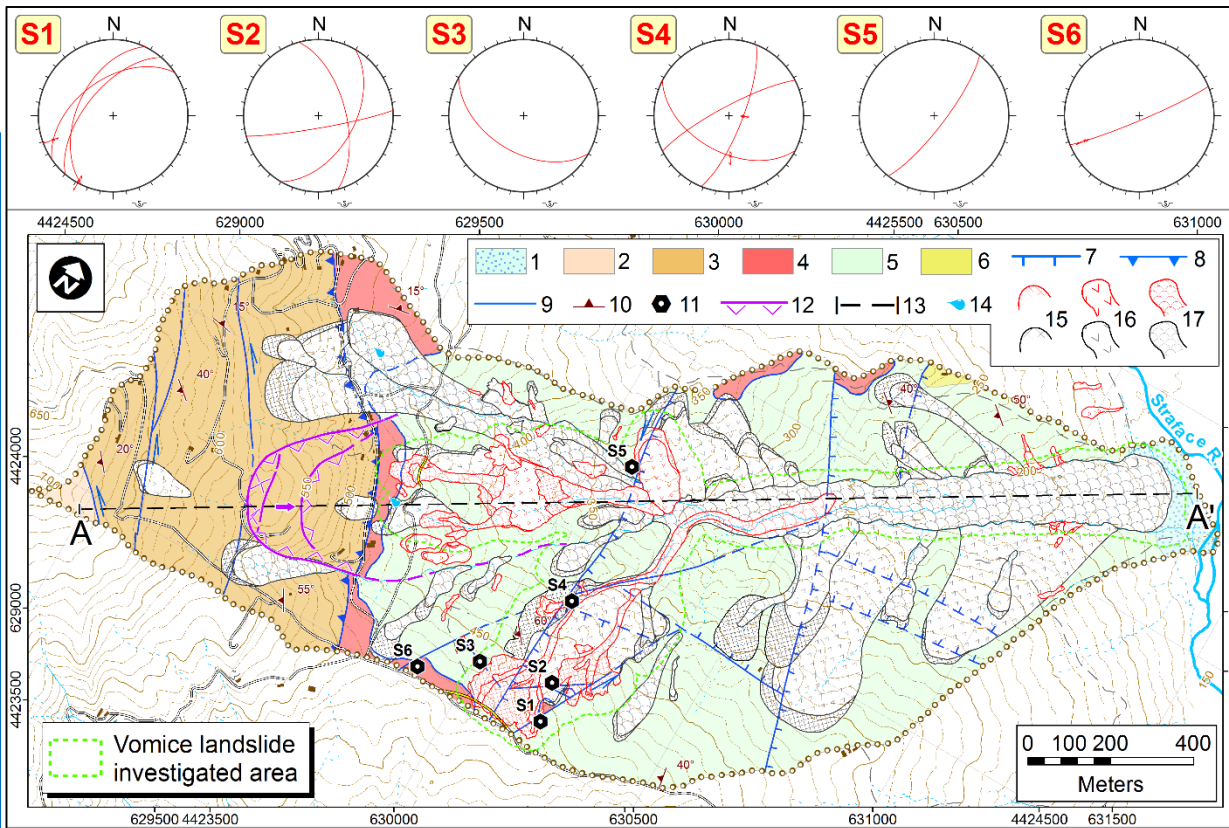
Luigi Borrelli¹, Massimo Conforti¹, Michele Mercuri², Francesco Muto²

¹CNR IRPI, via Cavour 4/6, 87036 Rende (CS); ²Università degli Studi della Calabria - Dipartimento di Biologia, Ecologia e Scienze della Terra (DiBEST)- Via P. Bucci, cubo 15B - 87036 Arcavacata di Rende (Cosenza, Italy),

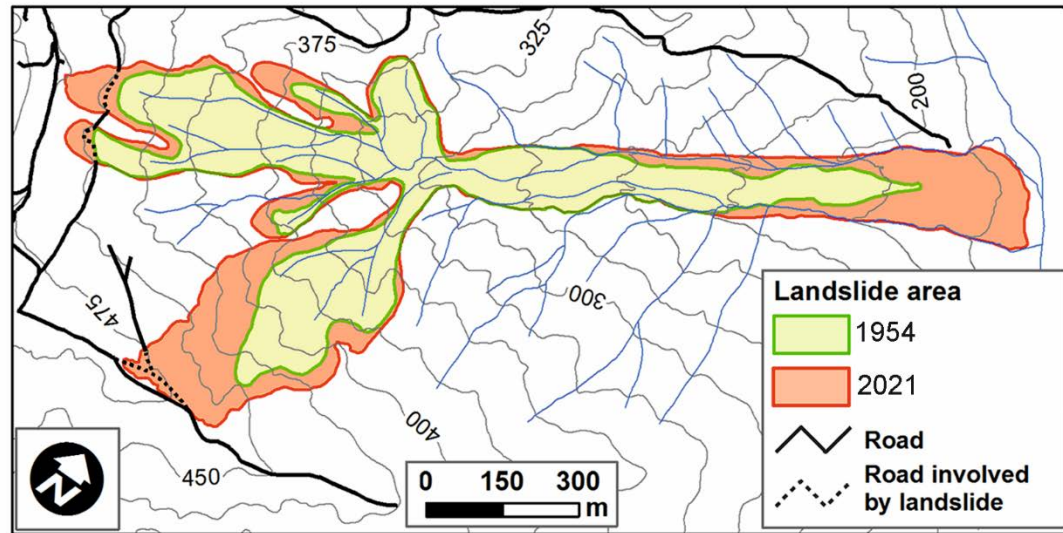
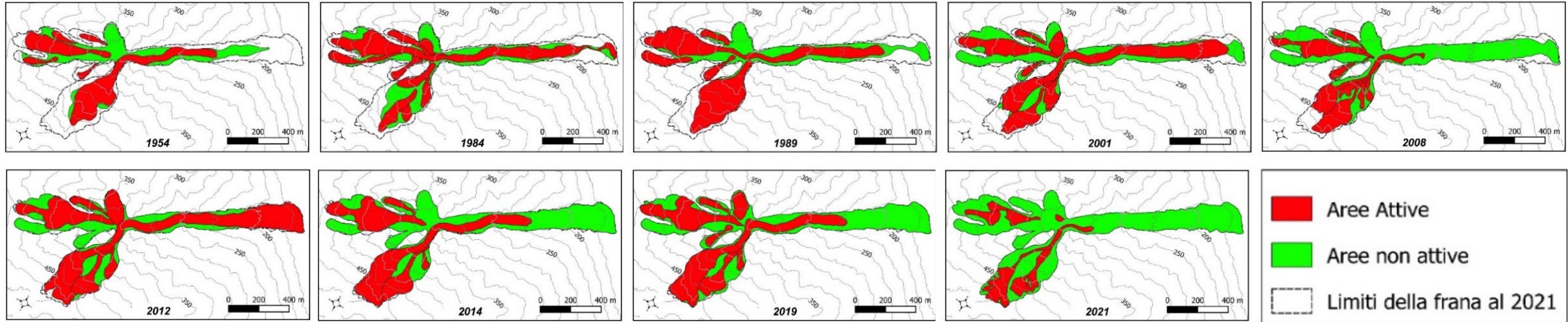
e-mail: massimo.coforti@irpi.cnr.it,



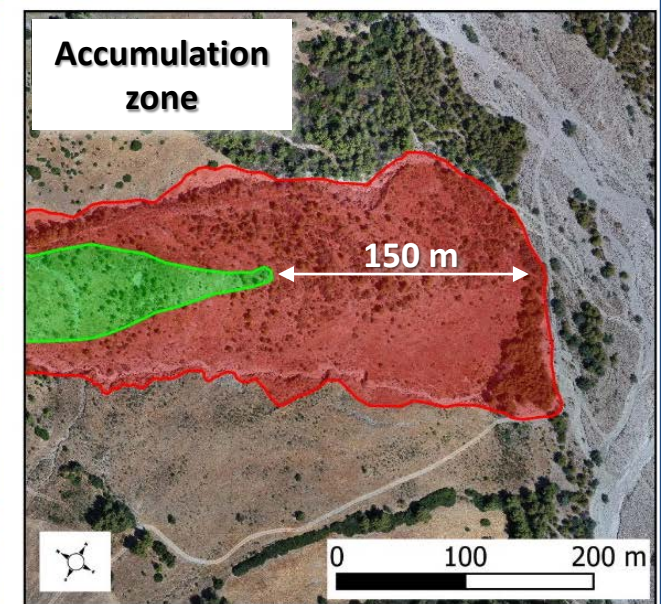
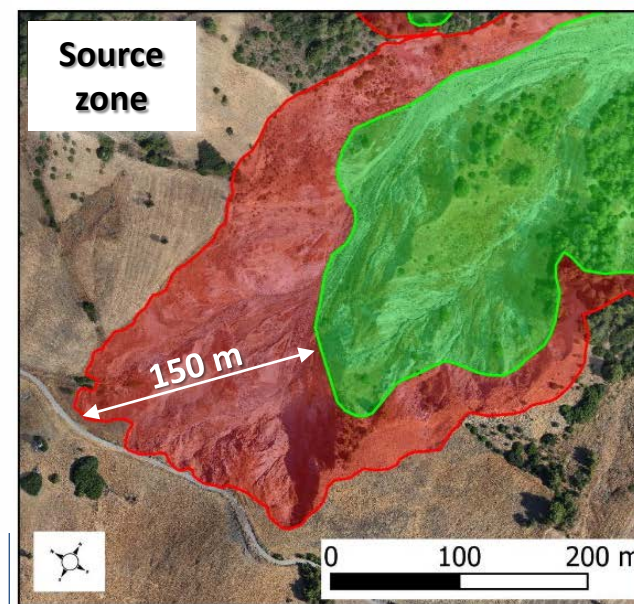
LA FRANA DEL VOMICI – ANALISI GEOLOGICA-GEOMORFOLOGICA



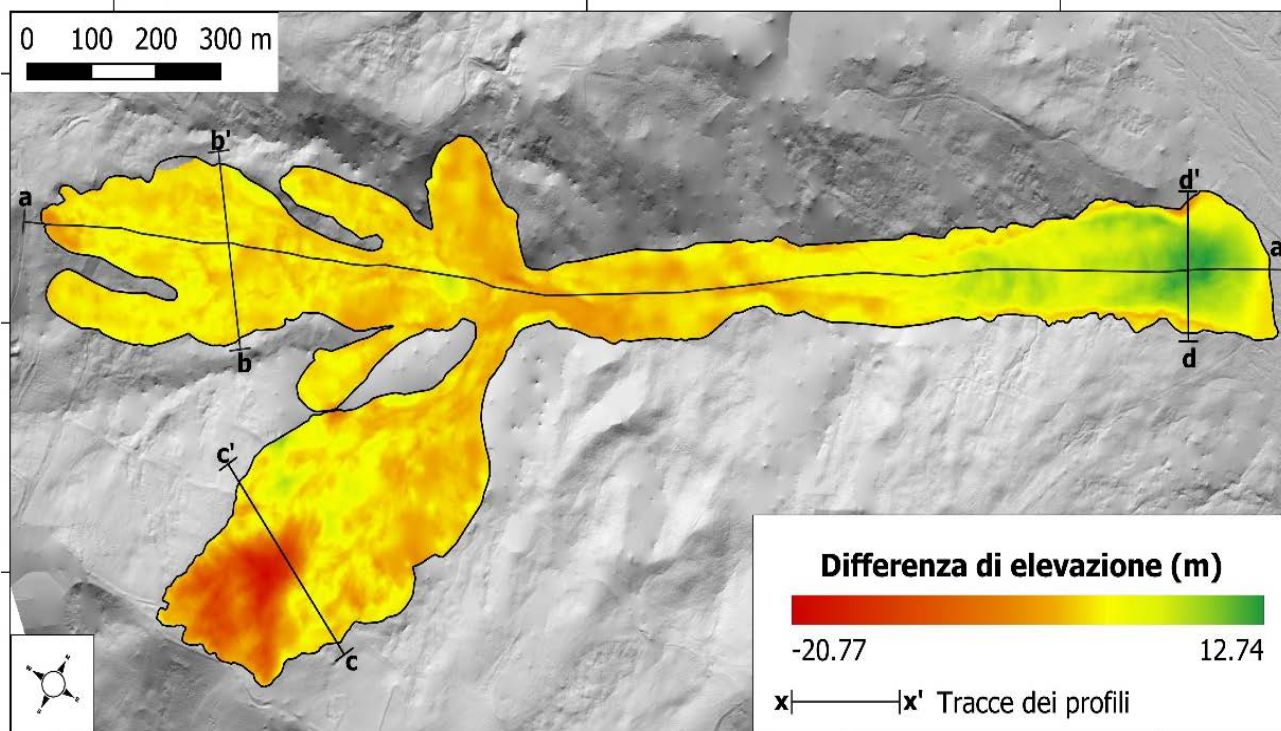
LA FRANA DEL VOMICE – ANALISI MULTITEMPORALE



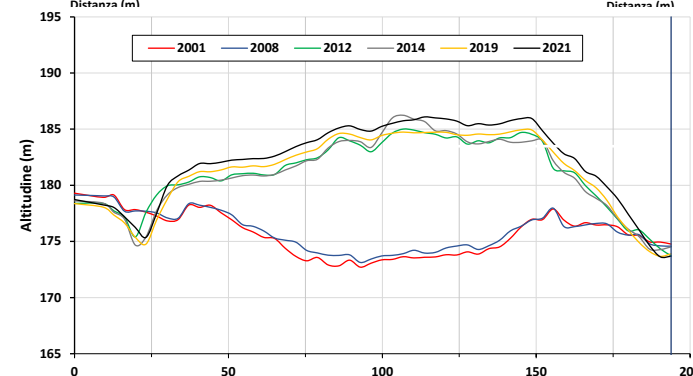
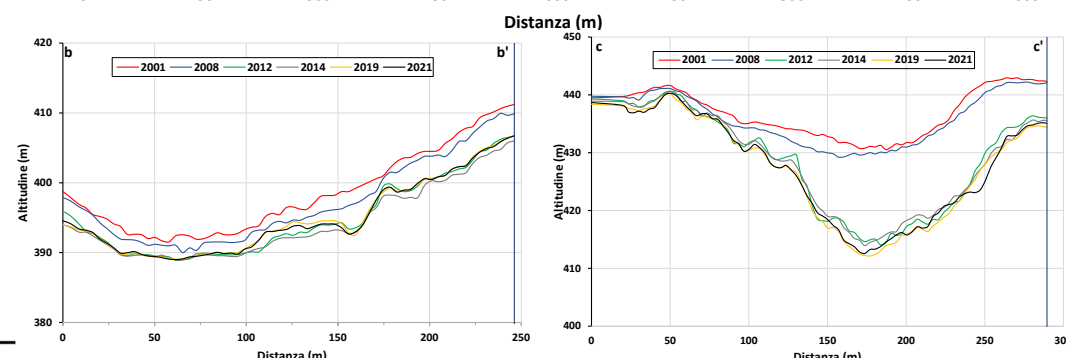
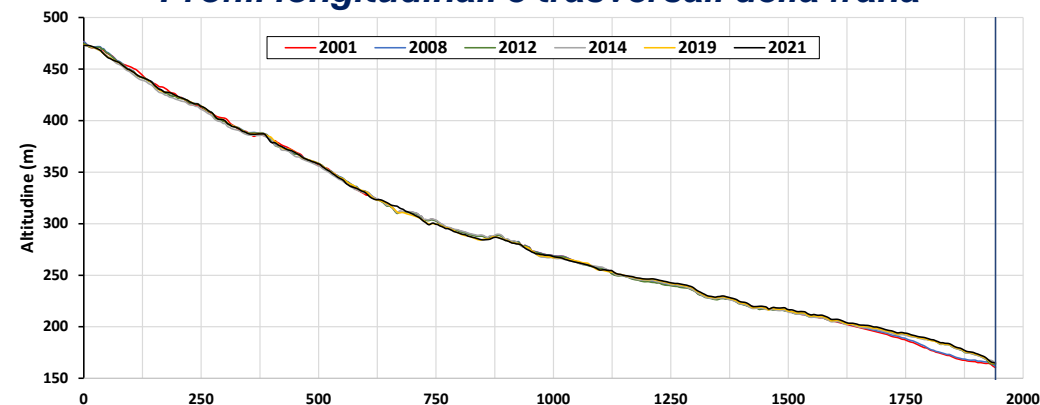
Incremento del 73% dell'area in frana nel periodo 1954-2021



LA FRANA DEL VOMICE – DIFFERENZE DI ELEVAZIONE 2001-2021



Profili longitudinali e trasversali della frana



Periodo	Differenze di elevazione (m)				Tassi annuali (m/anno)					
	Erosione				Accumulo				Erosione	Accumulo
	Min	Max	Media	Dev. St.	Min	Max	Media	Dev. St.	Media	Media
2001-2008	-0.01	-9.12	-4.06	3.16	0.01	7.52	3.96	2.32	-0.58	0.57
2008-2012	-0.01	-12.80	-4.66	3.63	0.01	16.62	5.16	3.62	-1.16	1.29
2012-2014	-0.01	-8.00	-1.75	1.29	0.01	7.60	2.23	2.28	-0.88	1.12
2014-2019	-0.01	-9.70	-3.68	2.52	0.01	6.50	2.25	1.26	-0.74	0.45
2019-2021	-0.01	-5.54	-1.06	0.69	0.01	6.34	1.00	0.46	-0.53	0.50
2001-2021	-0.01	-20.77	-2.52	3.35	0.01	12.73	3.06	2.70	-0.13	0.15